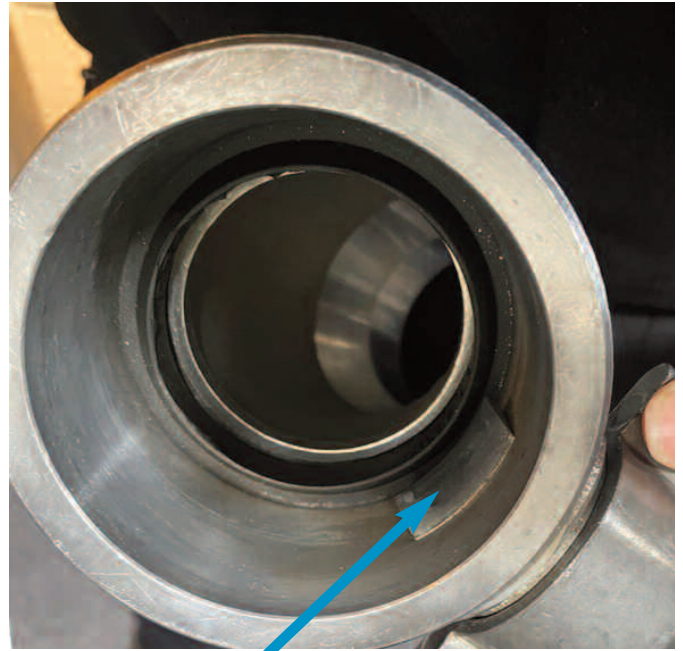
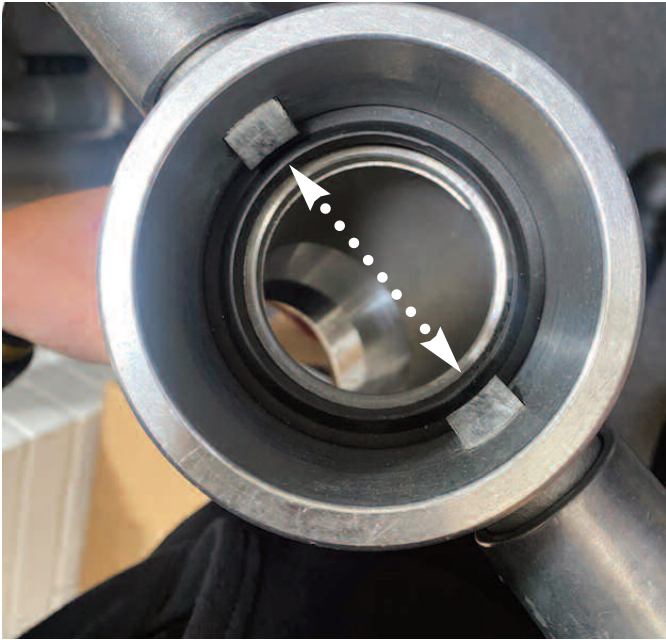


FEMALE INSTANTANEOUS LUG ADJUSTMENT



Lug removal

- Remove end caps.
- Use one hand to push the latch in while undoing the nut inside the twist/pull handles.
- When the nut has been removed, slowly release the finger taking tension off the spring.
- Remove the latch, clean and grease before reversing the steps to reassemble.

Tools needed

- Small screwdriver to remove end caps
- 13mm socket and ratchet
- Rag or blue roll
- Grease

Using the top edge of the latch

- When adjusting the latch to suit a male instantaneous, use the picture above as a guideline.
- Tightening the nut will make the latch disappear into the body, allowing less movement on the spring.

